



The Quarterly Newsletter
of The Linus Connection

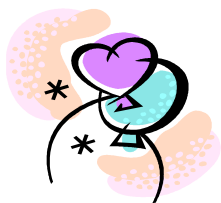
Blanketing Central Texas

The Mission of the Linus Connection is to provide
a handmade security blanket to every child who is in
a crisis or at-risk situation in Central Texas.

January – March 2008

Vol. 7 Issue 1

First of all Congratulations to everyone who quilts, crochets and knits for the Linus Connection. We hit a new record for the number of quilts donated this year. Ladies you contributed 4269 blankets. This is outstanding.



Third Annual Blanket Challenge and Linus Eighth Birthday Party

Our October Meeting was packed full of many different functions.

We celebrated Linus' 8th Birthday, we had our 3rd Annual Blanket Challenge and we raffled off our donated Quilt.

RAFFLED QUILT

Our raffled quilt was a Thimbleberry Queen sized quilt pieced and donated by Annette Copeland and quilted by Shirley Wolfe. Winner of the raffle was Amanda Hartley.

THIRD ANNUAL BLANKET CHALLENGE

As usual there were many wonderful blankets. The challenge had 2 categories; fabric quilts and yarn blankets. Awards were given for 1st and 2nd place in each category. The judging was done by ballot, each person voting for 1 yarn blanket and 1 fabric quilt.

Fabric Quilts Award - \$100 Gift Certificate from the *Honey Bee Quilt Shoppe in NW Austin* was given to 1st place.

Wal-Mart, donated a \$50 Gift Certificate for 2nd place.

Yarn Blanket Award - \$100 Gift Certificate from the *Blue Bonnet Yarn Shop in Cedar Park* was given to 1st place.

Wal-Mart, donated a \$50 Gift Certificate for 2nd place.

Winners of the challenge were:

YARN CATEGORY:

1st – Keith Brown, 2nd – Sharon Kyslowsky

FABRIC CATEGORY:

1st – Stephanie Sabatini, 2nd Sukie Jordan

Congratulations Ladies!!

Thanks to all of you that entered the Challenge. All of the blankets were gorgeous. Go to the Linus Website to see pictures of the blankets.

www.linusconnection.org

500th BLANKET DONATED

Rehka Nadkarni donated her 500th crochet blanket. Okay, all of you that crochet, here is your inspiration.

DONATIONS

Chisholm Trail Quilt Guild - \$845

They raffled a basket of notions at the Chisholm Trail Quilt Show at Dell Diamond. Ruth Aulds, Show Chair and Barbara Jarman organized the Linus Chest.

Texas All British Cars Show - \$400

Some of the proceeds from the Texas All British Car Days that was held at Settlement Park was donated to Linus. The check was presented by Phillip Reese

Jaguar Club - \$300

Tom Thornton V.P. of the Jaguar Club presented the check.

Worship Place in Sun City - \$500

Rehka Nadkarni - \$500

We would like to thank everyone for the wonderful donations. This money will buy a lot of fabric and yarn for us to be able to continue with our mission of giving blankets to children in need.

**NAUMANN ELEMENTARY SCHOOL
DONATES BLANKETS**

Naumann Elementary School donated 200 plus fleece blankets to Linus. Funds were collected from the Naumann Elementary community to purchase the material to make these blankets. Parents volunteered to cut strips on all four sides of the panels and the students knotted them together during their holiday parties on Dec. 20. A BIG thank you to Kristi Morris for coordinating this effort and also to the children who knotted all of these blankets.

**Georgetown Police Department and
Georgetown ISD Homeless Students Now
Receiving TLC's Blankets**

Both the Georgetown Police and GISD's homeless students have been added to TLC's distribution network. Fifty blankets suitable for ages 12 and up have been delivered to Zelinda Richards who oversees the student homeless program at Georgetown High School. Also, Lt. Pate, of Georgetown's South Command, has received fifty blankets varying in ages from infant to teen and they are already in the patrol cars ready for use. Sharon Kyslowsky, who worked hard to establish the contact with the police, and Ellen Dutkiewicz, individually wrapped and age-marked each blanket for the police in plastic cleaner bags to facilitate clean and accurate delivery by patrolmen. Both organizations have expressed their appreciation for TLC's help in easing the distress of the young people they deal with. Thanks to all of TLC's contributors who make it possible to give comfort to yet two more groups of children in distress.

Board Changes

There were no changes to the Board this year. Thanks to all of the ladies who serve.

Monthly Demonstrations & Show and Tell

We will continue with our **Monthly Show and Tell** at 10 a.m. After Show and Tell we will have a demonstration of blanket making techniques. Patterns will be provided after the demonstration. Anyone wishing to demonstrate a favorite pattern or technique, please contact Ellen Dutkiewicz at 869-7616 or email her at redutkie@texas.net.

February 3D Flying Geese - Stephanie Sabatini
March Disappearing 9 patch
Nancie Voegele

Upcoming Blanket Meetings

All Monthly meetings will continue to be at St. Phillips Church in Round Rock from 9 a.m. - 11:30 on the third Saturday of each month. The next three dates are:

- * February 16
- * March 16
- * April 19

If you would like to attend, but do not have transportation, please contact us and we will do our best to arrange a ride.

Blanket Specifications Reminder

BLANKETS UP TO 2 YRS.

24 x 24 36 x 36

TODDLER 3 - 6 YRS

36 x 36 45 x 60

MIDDLE BLANKETS 7 - 12 YRS.

45 x 45 45 x 60

TEEN BLANKETS 13-18 YRS.

42 x 54 54 x 65

Blankets should be durable and made in child-friendly colors/patterns. Suggested materials are cotton quilting fabric and cotton batting for quilts, and acrylic yarn for crocheted or knitted blankets. Please avoid seasonal materials, we want the children's blankets to be special all year long! Blanket supplies are available at our monthly meetings. French binding is preferred, as it is more durable and will last longer than "quick turn" and other binding methods. Quilts should be machine quilted or hand tied. Please check for pins before turning your blanket in! When labeling your Linus blanket, the sew-on tag should be attached on the back side near one of the bottom corners. These can be hand-whipped or machine sewn. Paper labels should be pinned on quilts 5" and 5" up from the back bottom corner of the quilt. Please TIE paper labels to all crocheted or knitted blankets to prevent damage.

Places to Drop Off Your Quilts

Georgetown - There is a new Georgetown drop off location to replace Wesleyan Retirement Home. The Wesleyan is moving to a new facility and will not be available. Margarite Holt, owner of the Hill Country Bookstore on the square in Georgetown, has graciously agreed to be the new collection site. The bookstore is open Monday-Saturday, 10 am - 6 pm, Sunday, 1 - 5 pm. Their number is 512-869-4959
E-mail hcbookstore@suddenlinkmail.com.

Round Rock - Margarita - 255-9241
Cedar Park - Dee - 331-5847